

Attend to Precision



Mathematical Practice Standard - MP6

What does it mean?



Calculate and answer with a degree of precision



Label quantities appropriately



Understand meaning of symbols



Communicate precisely and use Mathematical language

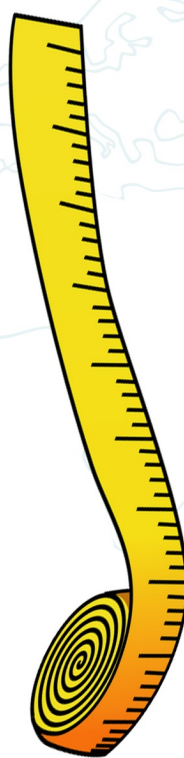
As a teacher, I



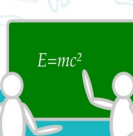
Communi-
cate clearly with
clear definitions



Emphasize the
importance of precision in
measurement

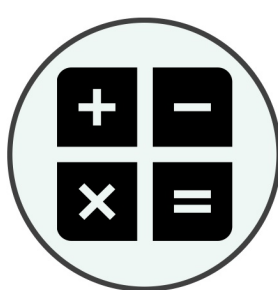


Help make the connection
between vocabulary, student
thinking, unit labels and
calculations



Encourage the
use of Math
vocabulary
during
conversations

As a student, I CAN...



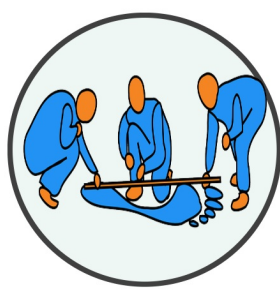
Calculate with
accuracy and
efficiency



Use correct labels,
symbols and
terminology



Talk and give
explanations using
correct vocabulary

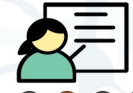


Measure and label
using appropriate unit
of measurements



Think with clarity
about the process of
problem-solving

Questions to ask to develop Mathematical Thinking



Explain how
you solved
the problem



Did you use the
most efficient way
to solve the problem?



What does
_____ mean?



How do you know
your answer is
accurate?



What mathematical
language, terms,
definitions can you use
to explain....?



What labels
could you use?

Sources

References

<http://www.corestandards.org/Math/Practice/>
<http://www.louisianabelieves.com/docs/common-core-state-standards-resources/guide--teacher-planning-for-math-practice-implementation.pdf?sfvrsn=2>
<http://blog.voyagersopris.com/make-sense-of-problems-and-persevere-in-solving-them-1>
<http://www.slideshare.net/chambless.laura/mathematical-practices-look-fors8-613>